

N.E. 1/4
SECTION 8, T.6N.,R.1.W.,S.L.B., & M.
HARRISVILLE CITY, OGDEN CITY & WEBER COUNTY

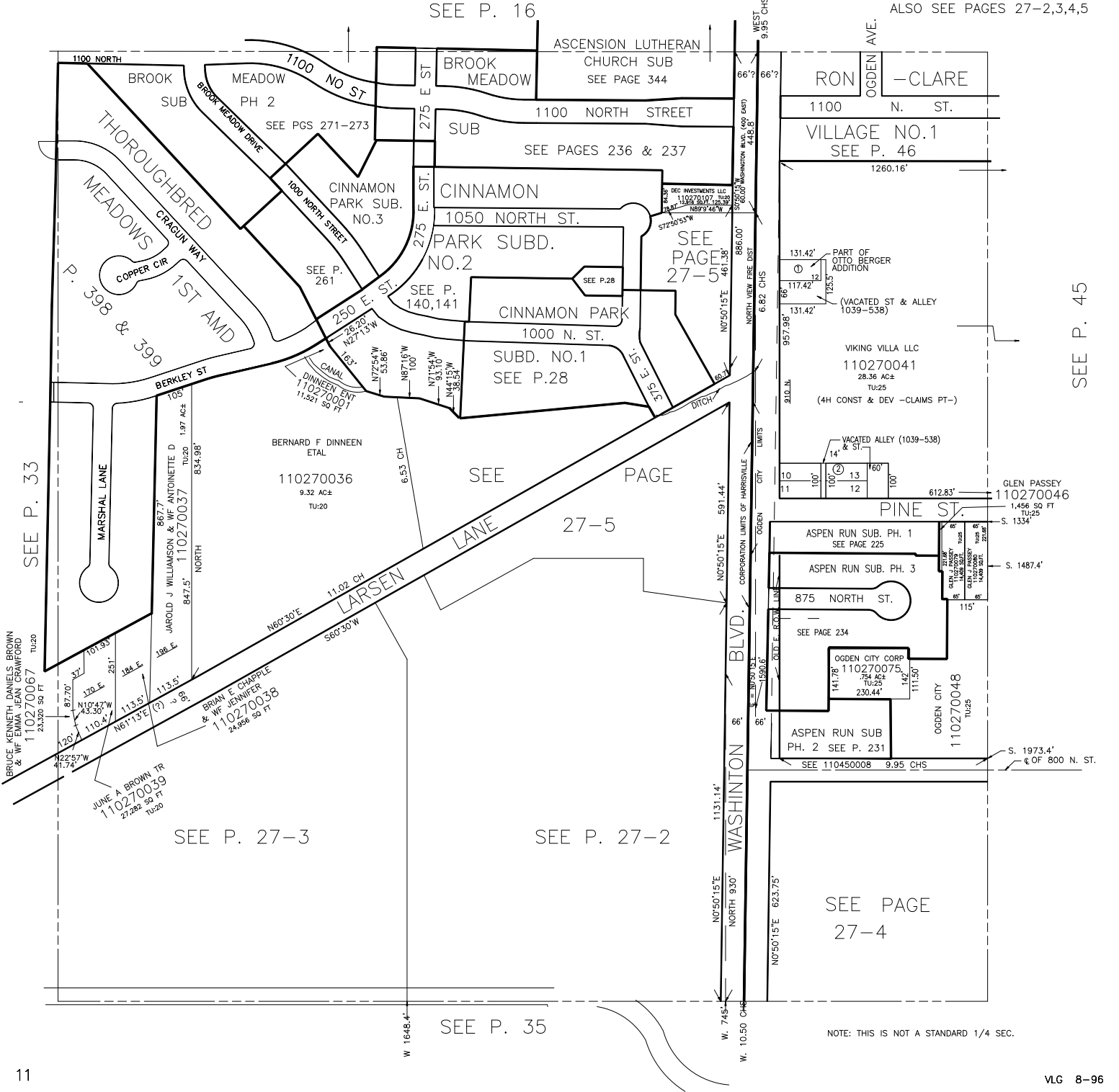
PREFIX : 11-027

TAXING UNITS: 17, 20, 25

SCALE 1" = 200'

SEE P. 16

ALSO SEE PAGES 27-2,3,4,5



SEE P. 33

SEE P. 27-3

SEE P. 27-2

SEE P. 35

SEE PAGE
27-4

SEE P. 45

NOTE: THIS IS NOT A STANDARD 1/4 SEC.